

# North-South Corridor

## Northern Connector Project

### Port River Expressway westbound off-ramp closure (Hanson Road)

As part of the Northern Connector Project, night works will be undertaken on the Port River Expressway westbound off-ramp to Hanson Road.

**Commencing:** Sunday 31 March, for approximately five nights, weather permitting.

**Workhours:** Between 7pm and 5am each night.

**Activities:** Installation of services and stormwater drainage.

**Traffic management:** The Port River Expressway westbound off-ramp to Hanson Road will be closed. Access to Hanson Road will be maintained via two detour options:

1. Via the South Road Superway; or
2. Via the Port River Expressway to Eastern Parade (refer to map).

Speed and lane restrictions will apply in the vicinity of the works, including the Port River Expressway. Signage and traffic management will be in place to advise motorists of changed conditions.

Thank you for your patience while these important works are undertaken.

**More information:** To sign up for traffic updates, please contact the Project Information Line on 1300 916 221 or email your contact details to [northernconnector@lendlease.com](mailto:northernconnector@lendlease.com).

For real time roadwork information visit [www.addinsight.com.au/app](http://www.addinsight.com.au/app) and download the app, available for both Apple and Android, or visit the Traffic SA website at [www.traffic.sa.gov.au](http://www.traffic.sa.gov.au).

Follow [www.facebook.com/DPTISA](https://www.facebook.com/DPTISA) for regular project updates.

#13826788

**For further information:**

Call: 1300 916 221

Email: [northernconnector@lendlease.com](mailto:northernconnector@lendlease.com)

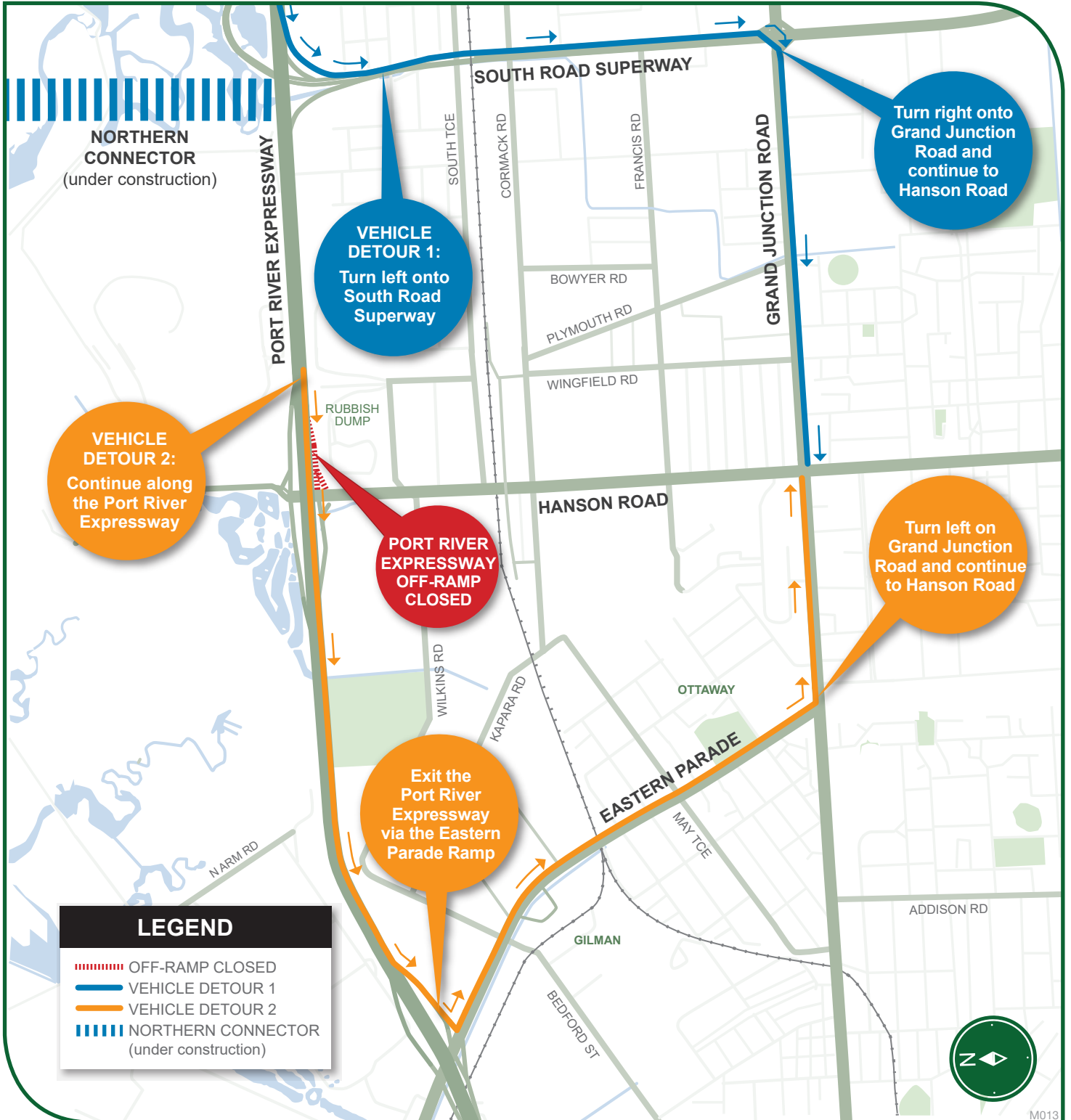
Visit: [dpti.sa.gov.au/northernconnector](http://dpti.sa.gov.au/northernconnector)



Government of South Australia  
Department of Planning,  
Transport and Infrastructure

# Port River Expressway Off-ramp Closure

Detour options



For further information  
 Visit: [dpti.sa.gov.au/northernconnector](http://dpti.sa.gov.au/northernconnector)  
 Email: [northernconnector@lendlease.com](mailto:northernconnector@lendlease.com)  
 Call: 1300 916 221



Australian Government

**BUILDING OUR FUTURE**



Government of South Australia

Department of Planning,  
Transport and Infrastructure

M013